

4

3

2

1

TOTAL VOLUME: 45000L

CONCRETE: 35MPa WITH 5-8% AIR ENTRAINMENT
NON SULPHATE RESISTANT

REINFORCING: GRADE 400W CONFORMING TO CSA G30.18
15M @ 200mm ON CENTRE EACH WAY
ADDITIONAL 15M AROUND PERIMETER AT SEAM BETWEEN

SECTIONS 15M x900mm ON DIAGONAL AT EACH CORNER OF LID OPENING

WEIGHT: TOP SECTION 19000KGS
BOTTOM SECTION 19000KGS
TOTAL 38000KGS

MAXIMUM BURIAL DEPTH: 1200MM OF GROUND COVER IN AREA OF
NON-VEHICULAR TRAFFIC

WATER TIGHTNESS: 2X ROWS CON-SEAL CS-102 MASTIC SEALANT BETWEEN
SECTIONS. SEALANT APPLIED ONSITE BY BOYD BROS CONCRETE
ACCORDING TO MANUFACTURER'S RECOMMENDED METHOD

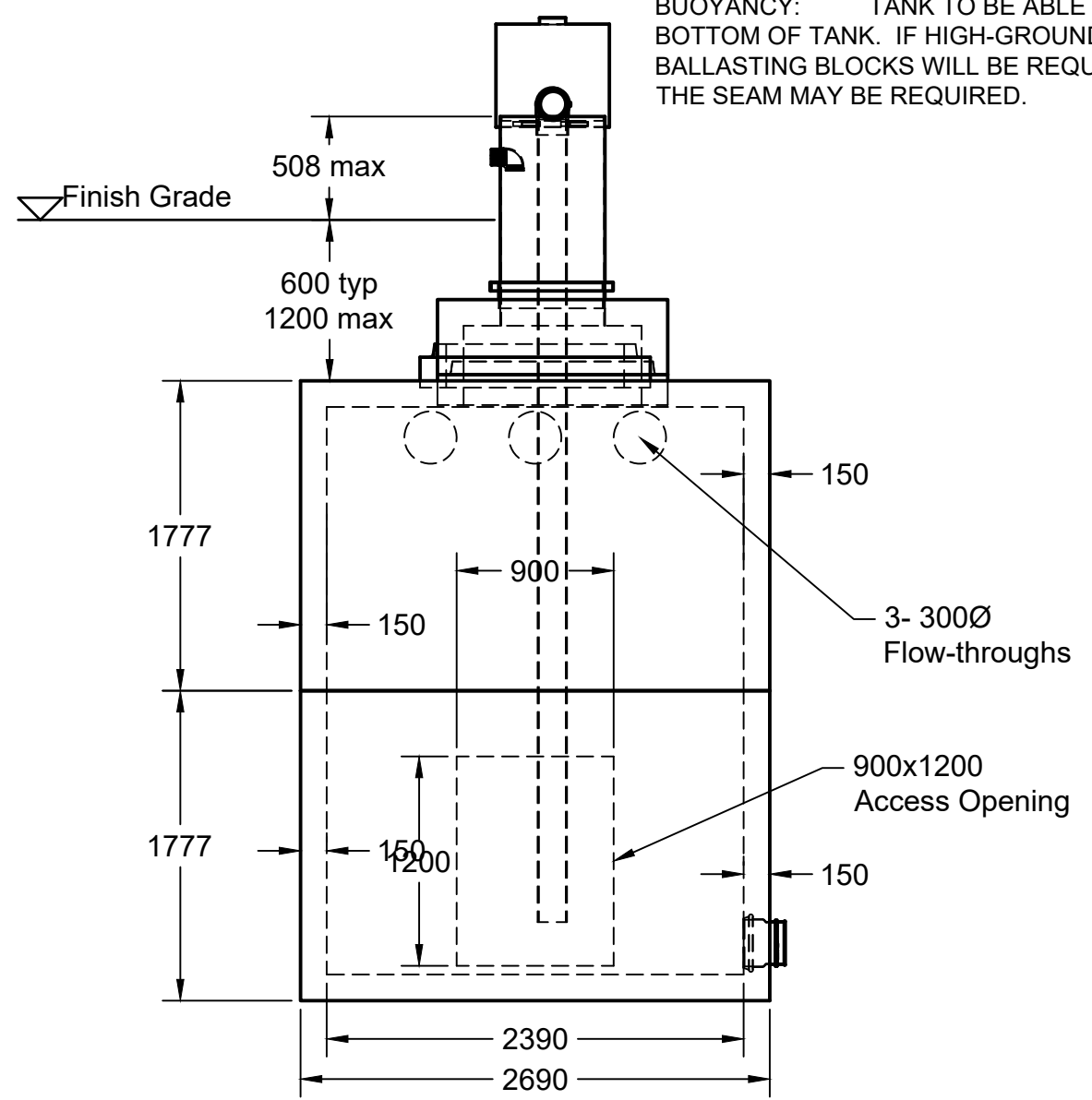
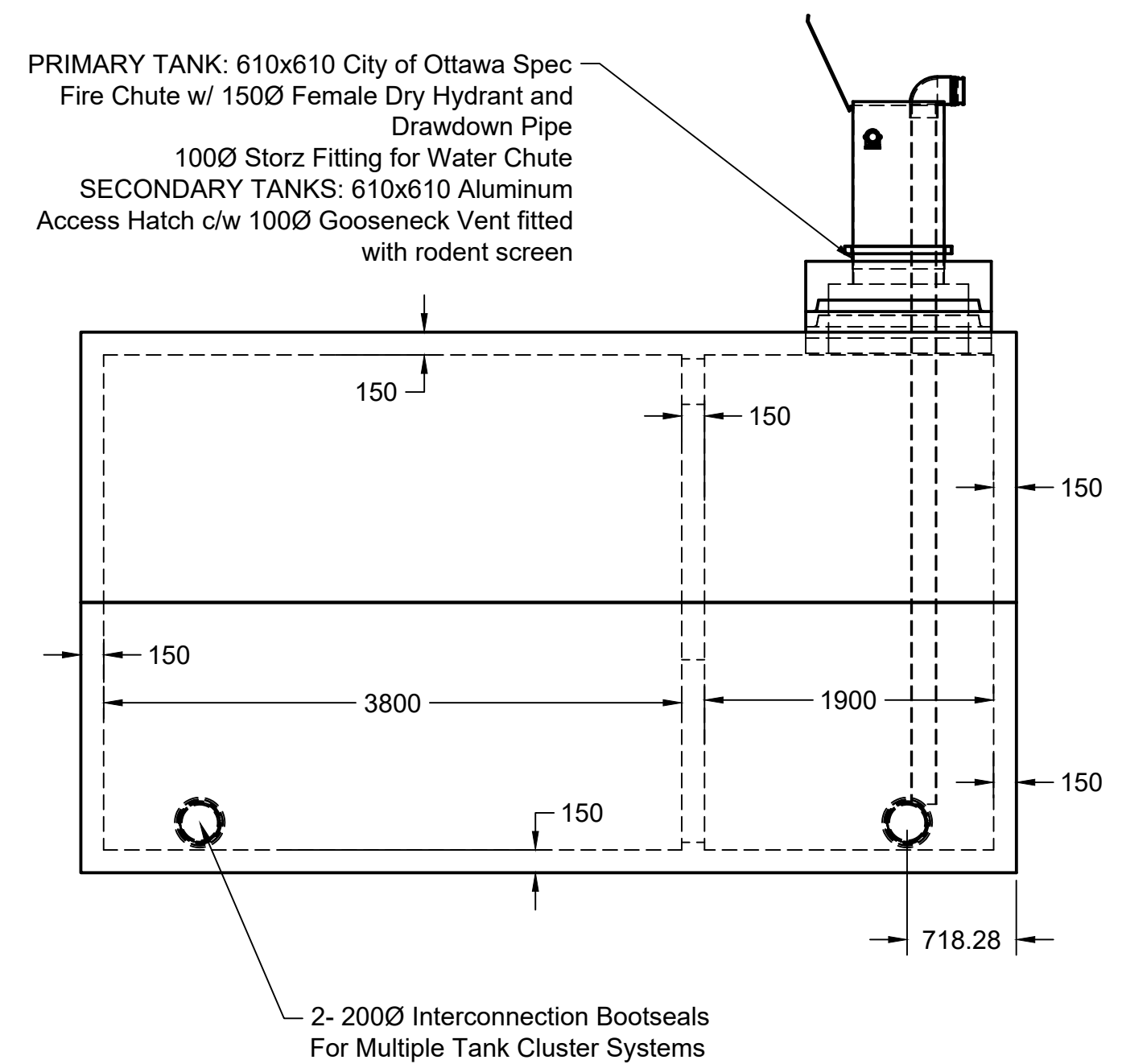
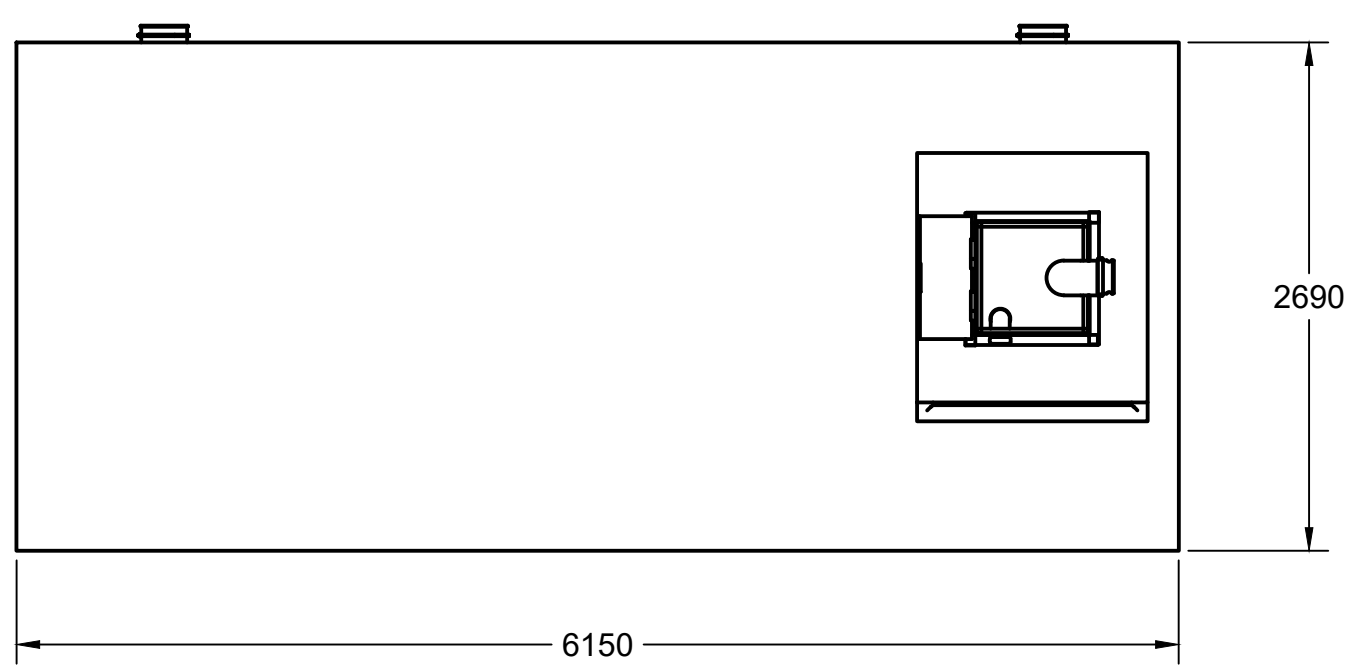
PIPE/WALL CONNECTIONS: 200mmØ Flexible Rubber Bootseal for PVC Supply Line

ACCESS OPENINGS:
PRIMARY TANK: 610X610 CITY OF OTTAWA SPEC FIRE CHUTE FOR FIRETRUCK
CONNECTION
SECONDARY ACCESS (OPTIONAL) :1200x1300 CAST-IN RISER FLANGE WITH
610X610 DRIP PROOF ALUMINUM ACCESS HATCH
900X1200 OPENING IN DIVIDER WALL FOR ACCESS TO BOTH CHAMBERS FROM
ONE ACCESS POINT

OPTIONAL STAINLESS STEEL BOLT-ON LADDER OPTIONAL

TANK DESIGN CONFORMS TO CSA STANDARD B66-15 WITH A NON-TRAFFIC LOAD ON TOP,
AND WITH HEAVY TRUCK LOADING DIRECTLY ADJACENT TO TANK TO ACCOMMODATE FIRE
TRUCK TO BE WITHIN 1M OF WATER DRAW-DOWN CHUTE, AS PER FIRE DEPT.

BUOYANCY: TANK TO BE ABLE TO WITHSTAND GROUNDWATER UP 2.0M FROM
BOTTOM OF TANK. IF HIGH-GROUNDWATER LEVEL IS IN EXCESS OF THIS, ADDITIONAL
BALLASTING BLOCKS WILL BE REQUIRED. ADDITIONAL WATERPROOFING MEASURES AT
THE SEAM MAY BE REQUIRED.



bb BOYD BROS
concrete products

5450 Cuddy St Osgoode, ON K0A 2W0
tel: (613) 826.2318 fax: (613) 826.3679
toll free: 888.846.6664
website: www.boydbrosconcrete.ca
email: info@boydbrosconcrete.ca

PROJECT		
Boyd Bros Concrete		
TITLE		
45000 Fire Tank		
DRAWN Rob Sanna 6/19/23 APPROVED		
SIZE	DWG NAME	REV
C	45000 Fire Tank	3
SCALE 1:40	WEIGHT 35000kgs	SHEET 1/1

4

3

2

1