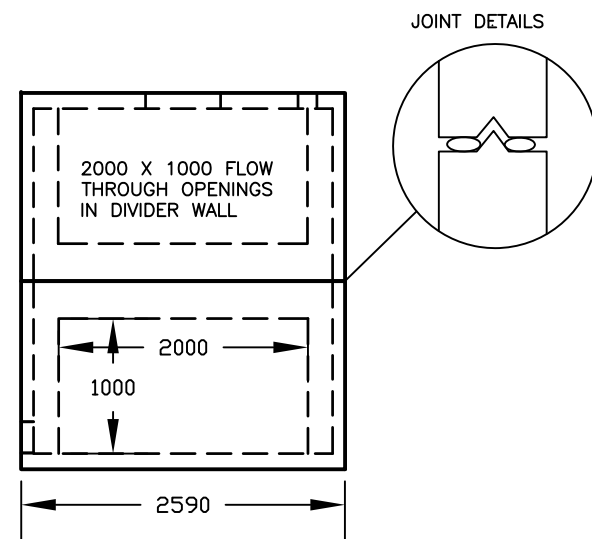
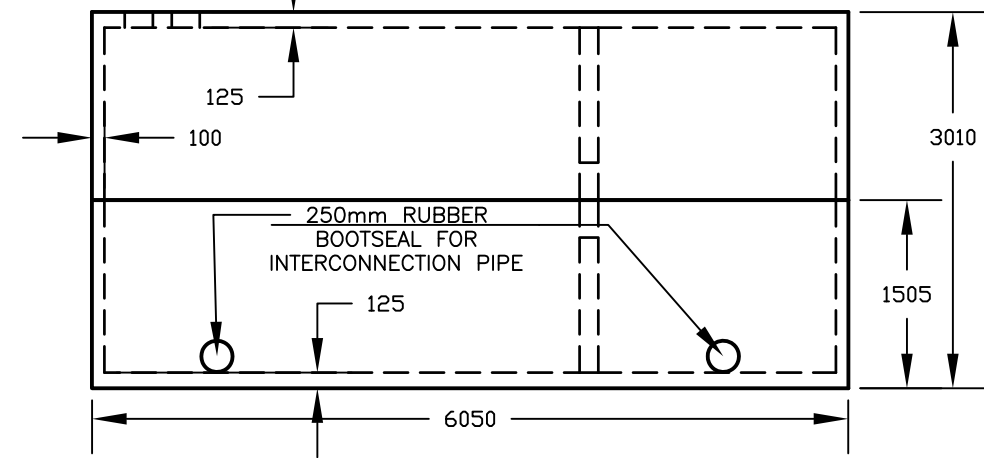
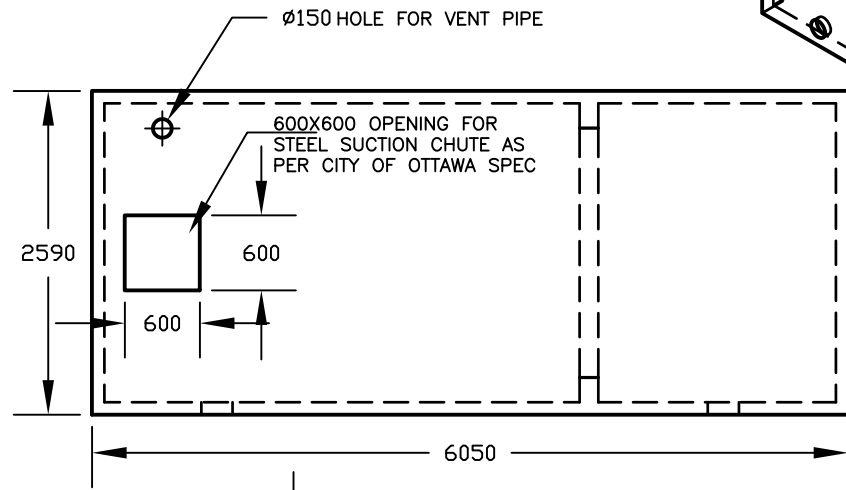


- WORKING VOLUME: 34465L
- TOTAL VOLUME: 37600L
- CONCRETE: 35 MPa WITH 5-8% AIR ENTRAINMENT
NON-SULPHATE RESISTANT
- REINFORCING: WALLS, FLOOR, AND LID
10M@ 200mm O/C E/W
10M BAR DIAGONALS AT EACH CORNER OF LID OPENINGS
- WEIGHT TOP SECTION 11120 KGS
BOTTOM SECTION 11120 KGS
TOTAL 22240 KGS
- MAXIMUM BURIAL DEPTH: 1200mm (48")
- WATER TIGHTNESS: 2X ROWS CON-SEAL CS-102 MASTIC SEALANT
BETWEEN PIECES. SEALANT APPLIED ONSITE BY BOYD BROS
CONCRETE ACCORDING TO MANUFACTURER'S
RECOMMENDED METHOD.
- ACCESS OPENINGS: 600mm X 600mm OPENING FOR FIRECHUTE (AS PER
CITY OF OTTAWA SPEC)
150MM HOLE FOR VENTPIPE
- DIVIDER WALL: 1000mm X 2000mm OPENING IN EACH HALF FOR
FLOW THROUGH BETWEEN CHAMBERS.



BOYD BROTHERS
 5450 CUDDY ST, OSGOODE, ONT, K0A 2W0
 tel (613) 826-2318 fax (613) 826-3679
 toll free 888-846-6664
 website www.boydbrosconcrete.ca
 e-mail info@boydbrosconcrete.ca

PRODUCT		
34000L FIRE RESERVOIR TANK		
SERIES NO	MODEL NO	DRAWN BY
12.2	34	RS
SCALE	SCALE	DATE
1:50	1.0	FEB 15, 2019