

WORKING VOLUME: 30380L  
 TOTAL VOLUME: 33500L

CONCRETE: 35 MPa WITH 5-8% AIR ENTRAINMENT  
 NON-SULPHATE RESISTANT

REINFORCING: WALLS, FLOOR, AND LID  
 10M@ 200mm O/C E/W  
 10M BAR DIAGONALS AT EACH CORNER OF LID OPENINGS

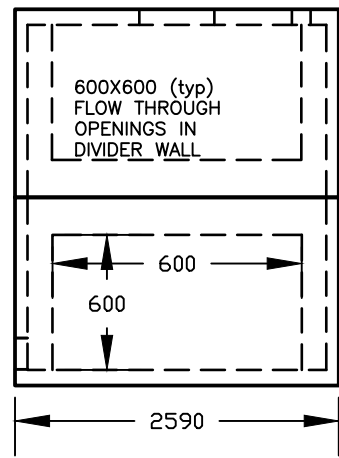
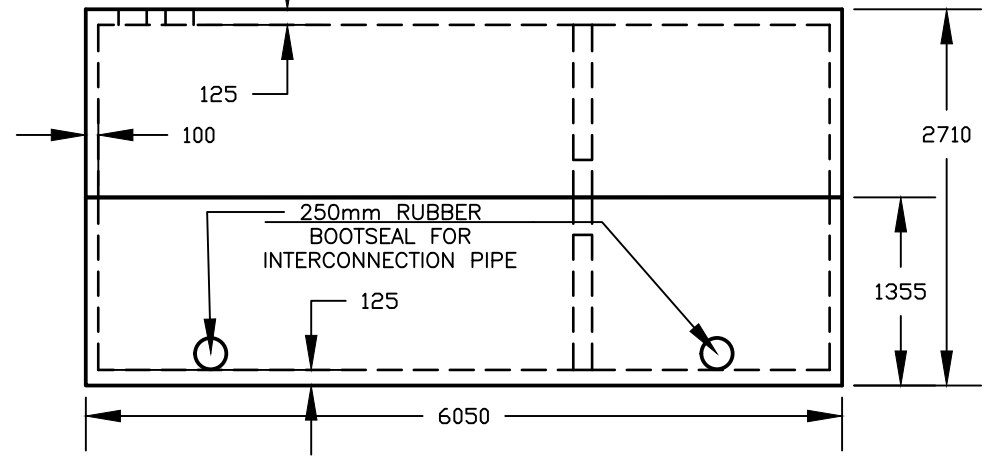
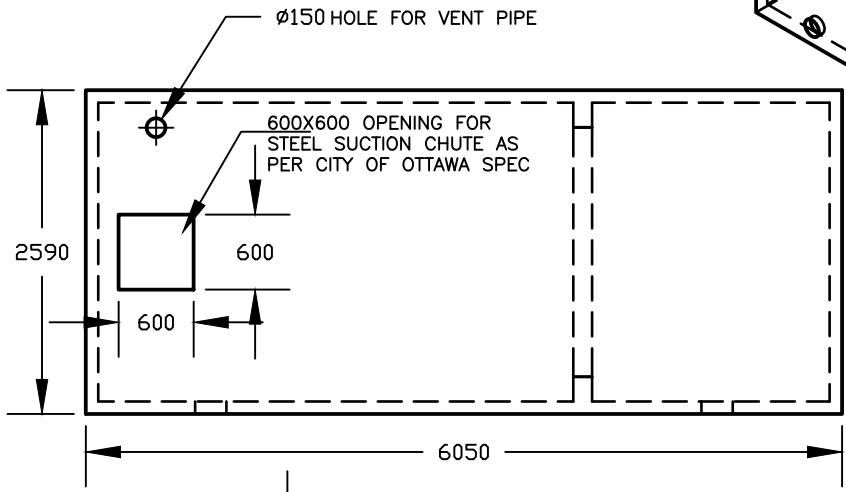
WEIGHT TOP SECTION 11120 KGS  
 BOTTOM SECTION 11120 KGS  
 TOTAL 22240 KGS

MAXIMUM BURIAL DEPTH: 1200mm (48") NO TRAFFIC

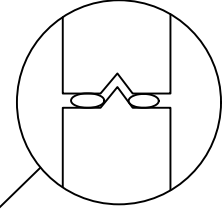
WATER TIGHTNESS: 2X ROWS CON-SEAL CS-102 MASTIC SEALANT  
 BETWEEN PIECES. SEALANT APPLIED ONSITE BY BOYD BRO  
 CONCRETE ACCORDING TO MANUFACTURER'S  
 RECOMMENDED METHOD.

ACCESS OPENINGS: 600mm X 600mm OPENING FOR FIRECHUTE (AS PER  
 CITY OF OTTAWA SPEC)  
 150MM HOLE FOR VENTPIPE

DIVIDER WALL: 600mm X 600mm OPENING IN EACH HALF FOR  
 FLOW THROUGH BETWEEN CHAMBERS.



JOINT DETAILS



**BOYD BROTHERS**  
 5450 CUDDY ST, OSGOODE, ONT, K0A 2W0  
 tel (613) 826-2318 fax (613) 826-3679  
 toll free 888-846-6664  
 website www.boydbrosconcrete.ca  
 e-mail info@boydbrosconcrete.ca

PRODUCT			
30000L FIRE RESERVOIR TANK			
SERIES NO	12.2	MODEL NO	30
SCALE	NTS	SCALE	1.0
DRAWN BY	RS	DATE	April 8 2020