

4

3

2

1

WORKING VOLUME: 8000L
 TOTAL VOLUME: 10200L

CONCRETE:
 35MPa w/ 5-8% Air Entrainment
 Non-sulphate resistant

REINFORCING:
 Lid - 10M bar at 375mm O/C E/W
 Tank body - 10M bar at 450mm O/C E/W

WEIGHT:
 TOP SECTION: 3020kgs
 BOTTOM SECTION: 5500kgs

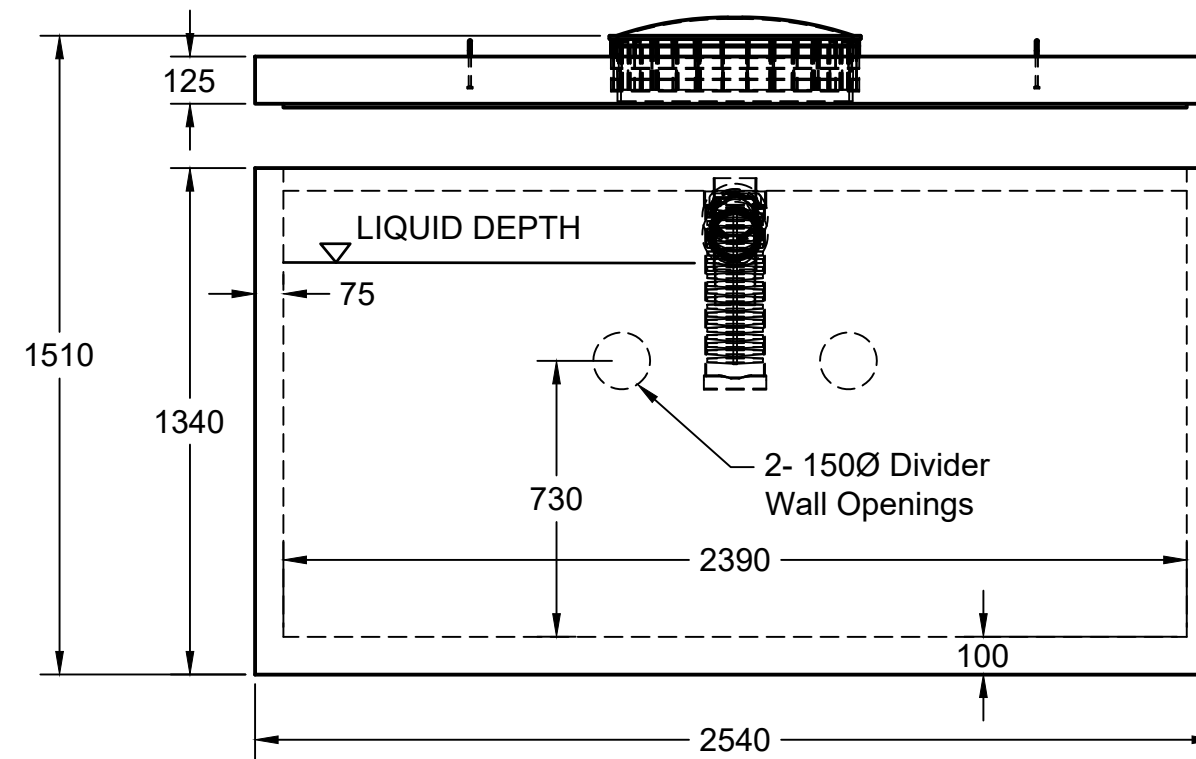
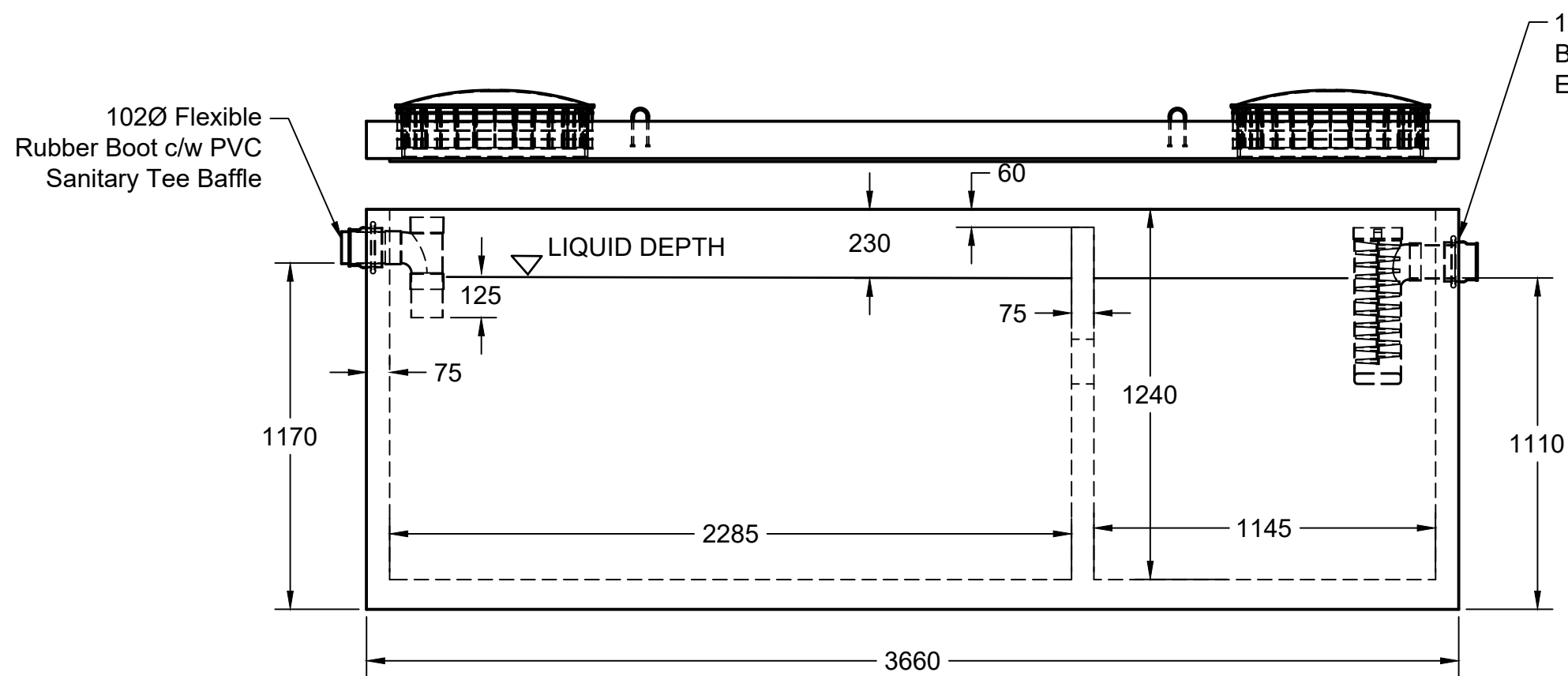
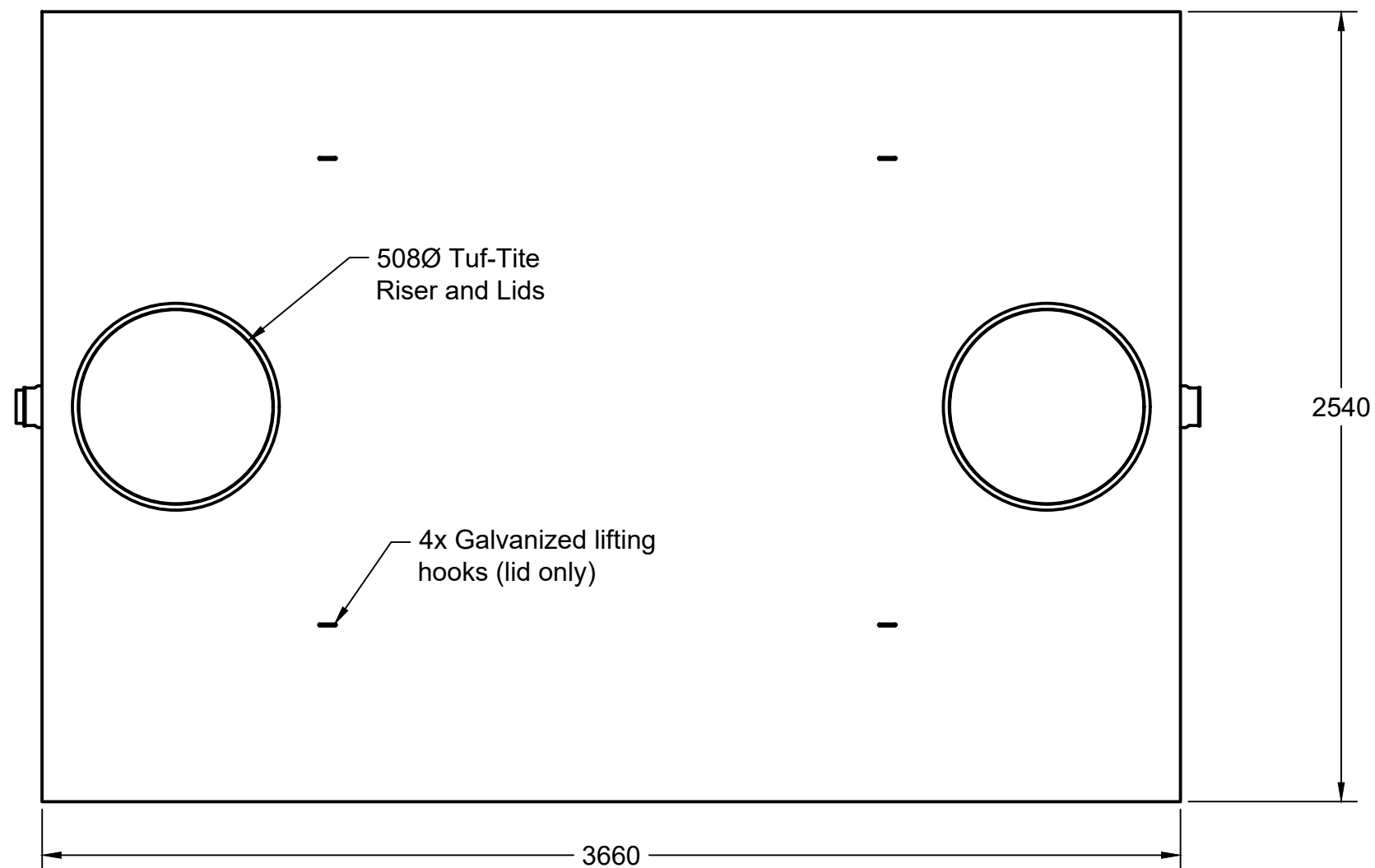
MAX BURIAL DEPTH: 1200mm

WATER TIGHTNESS:
 1x row ConSeal CS102-³/₄" Butyl mastic between sections.
 Sealant applied in factory according to manufacturers recommended method.

PIPE / WALL CONNECTIONS:
 INLET 100mm flexible watertight rubber seal integrally cast in concrete c/w PVC Sanitary Tee Baffle
 OUTLET 100mm flexible watertight rubber seal integrally cast in concrete c/w Tuf-Tite EF6 Effluent Filter, or equivalent

DIVIDER WALL monolithically cast w/ body of tank, c/w 2x 150Ø flow through holes

ACCESS OPENINGS:
 Tuf-Tite 500Ø Risers and Lids.
 Contact us for additional options



bb boyd bros
 concrete products

5450 Cuddy St Osgoode, ON K0A 2W0
 tel: (613) 826.2318 fax: (613) 826.3679
 toll free: 888.846.6664
 website: www.boydbrosconcrete.ca
 email: info@boydbrosconcrete.ca

| | | |
|----------------------------------|----------------|-----------|
| PROJECT | | |
| BOYD BROS CONCRETE | | |
| TITLE | | |
| 8000L Reg | | |
| DRAWN Rob Sanna 3/28/23 APPROVED | | |
| SIZE | DWG NAME | REV |
| C | 8000Reg | 2 |
| SCALE 1:20 | WEIGHT 8500KGS | SHEET 1/1 |

4

3

2

1