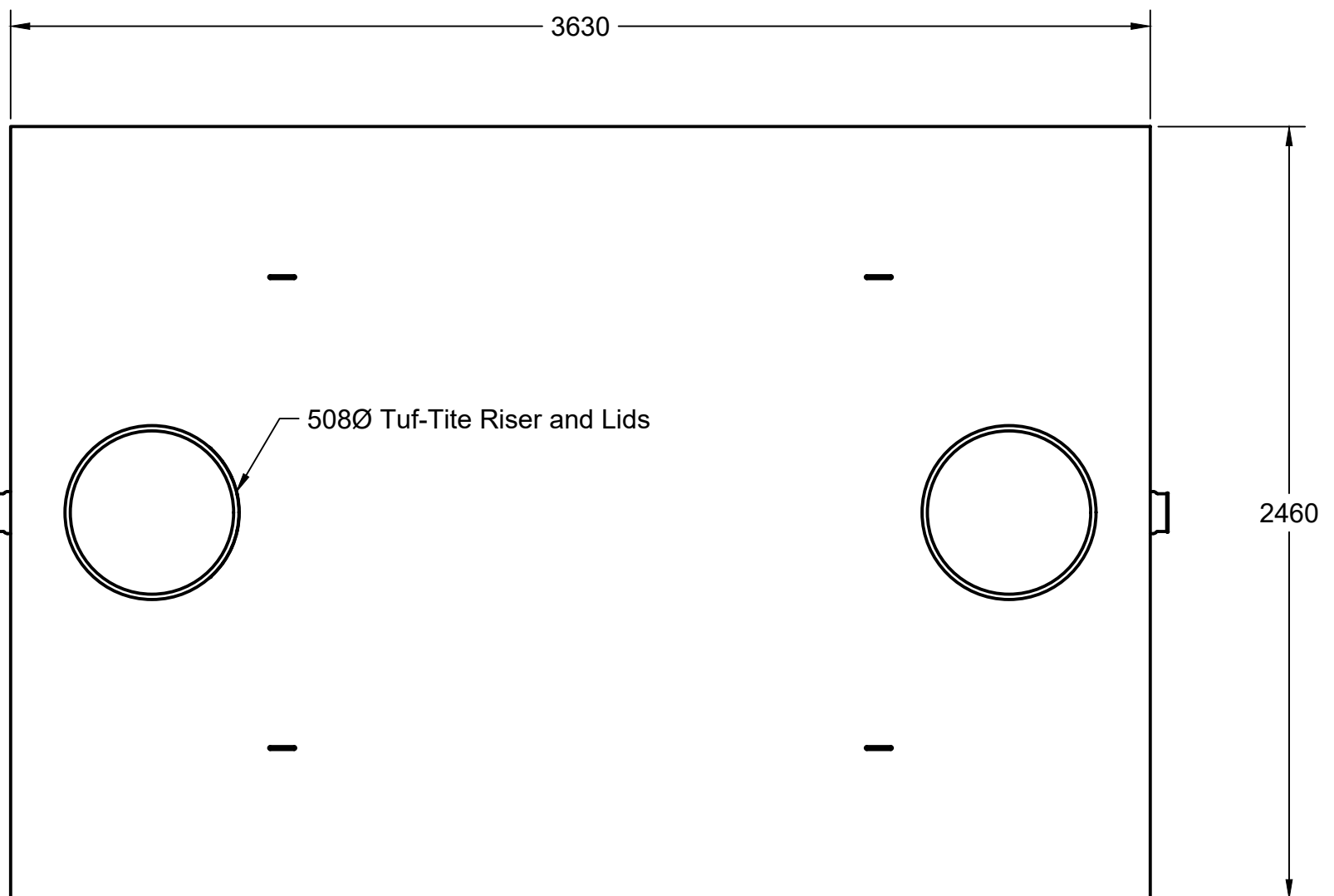


4

3

2

1



WORKING VOLUME: 7200L  
 TOTAL VOLUME: 8850L

CONCRETE:  
 35MPa w/ 5-8% Air Entrainment  
 Non-sulphate resistant

REINFORCING:  
 Lid -10M bar at 375mm O/C E/W  
 Tank body -10M bar at 450mm O/C E/W

WEIGHT:  
 TOP SECTION: 3020kgs  
 BOTTOM SECTION: 5500kgs

MAX BURIAL DEPTH: 1200mm

WATER TIGHTNESS:  
 1x row 3/4" Butyl mastic between sections.  
 Sealant applied in factory according to manufacturers recommended method.

PIPE / WALL CONNECTIONS:  
 INLET - 100Ø flexible watertight rubber seal integrally cast in concrete c/w PVC Sanitary Tee Baffle  
 OUTLET - 100Ø flexible watertight rubber seal integrally cast in concrete c/w Tuf-Tite EF6 Effluent Filter, or equivalent

ACCESS OPENINGS:  
 Tuf-Tite 508Ø Risers and Lids.  
 Contact us for additional options

D

D

C

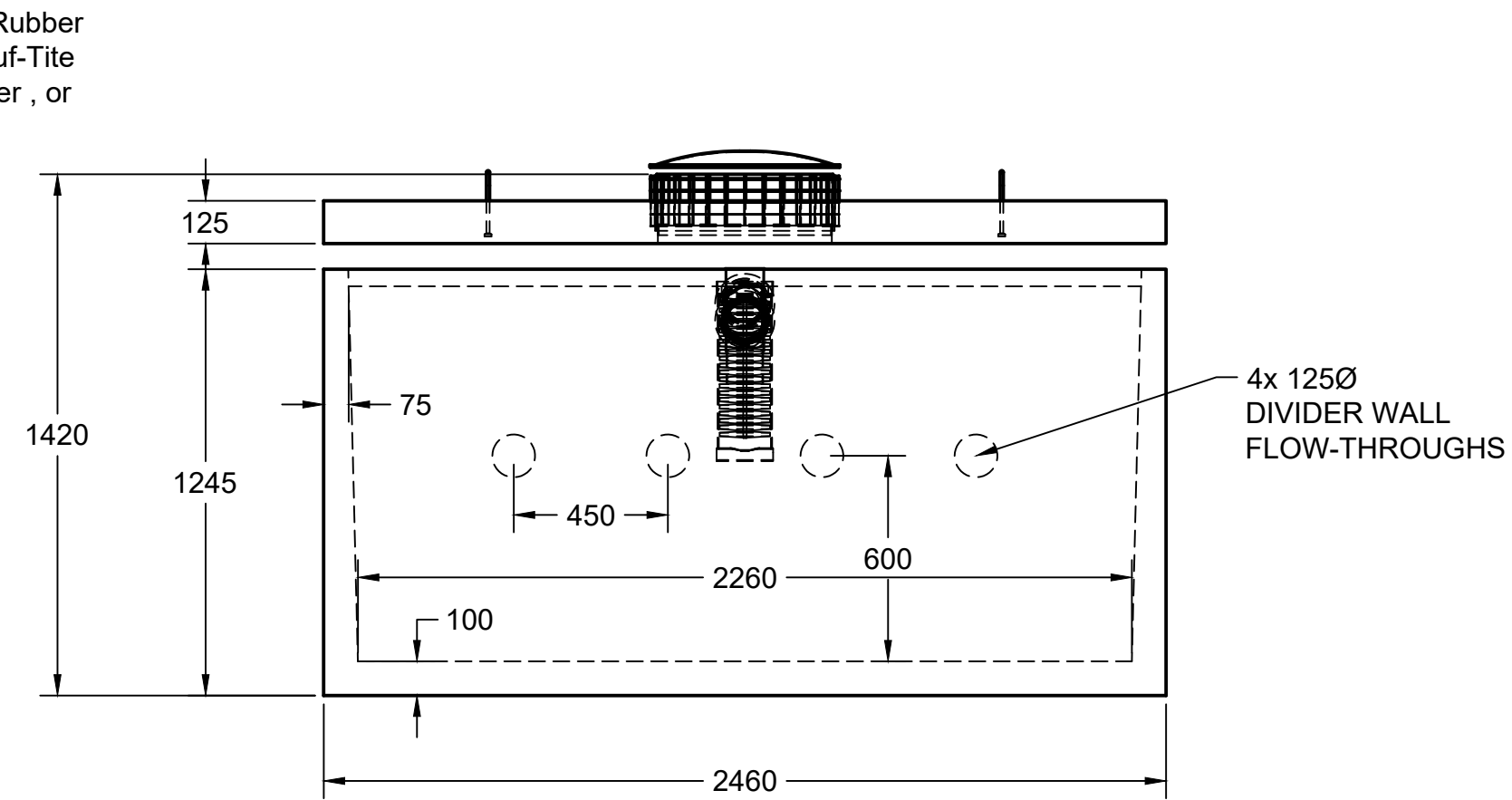
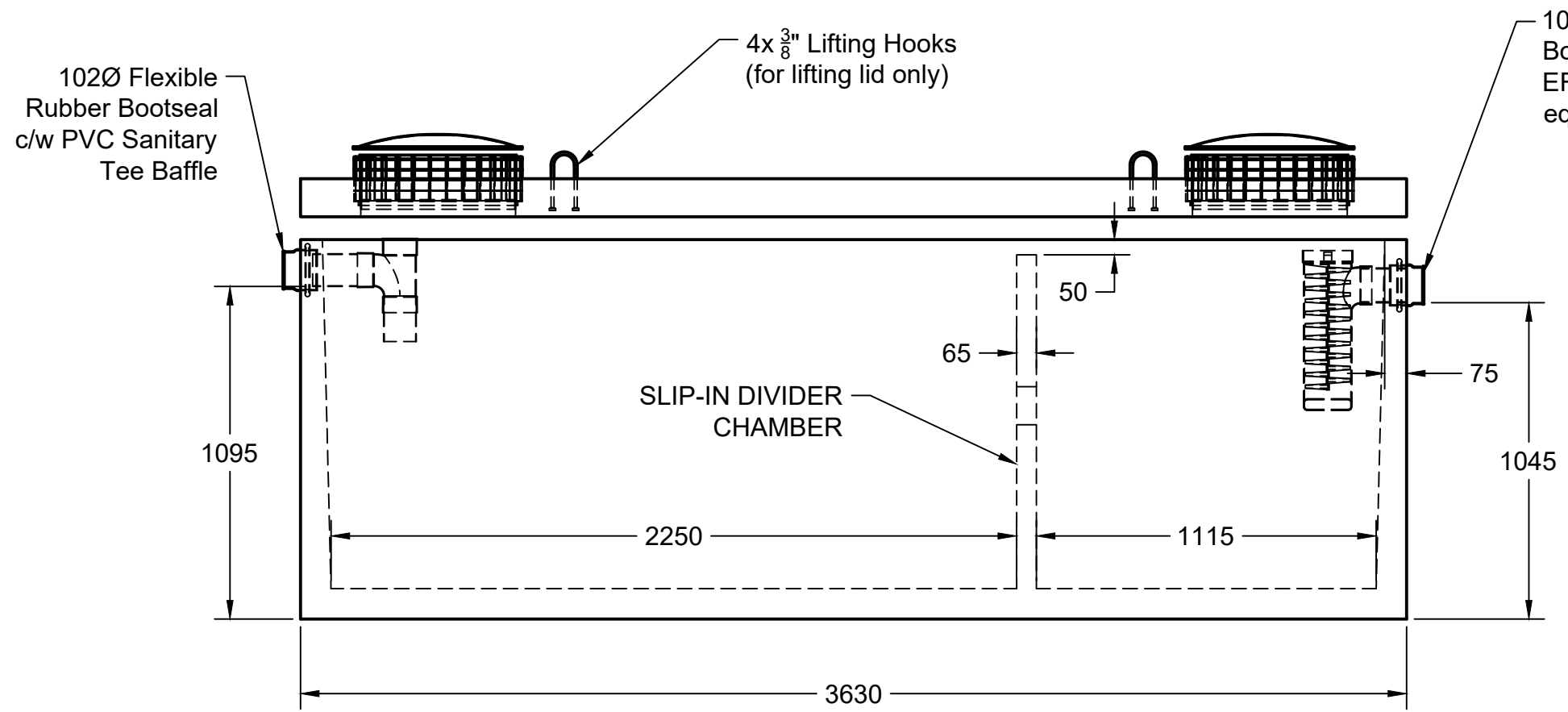
C

B

B

A

A



**bb boyd bros**  
 concrete products

5450 Cuddy St Osgoode, ON K0A 2W0  
 tel: (613) 826.2318 fax: (613) 826.3679  
 toll free: 888.846.6664  
 website: www.boydbrosconcrete.ca  
 email: info@boydbrosconcrete.ca

PROJECT		
BOYD BROS CONCRETE		
TITLE		
7200 LOW-BOY SEPTIC		
DRAWN Rob Sanna 6/13/24 APPROVED		
SIZE	DWG NAME	REV
C	7200LB	7.0
SCALE 1:20	WEIGHT 8520kgs	SHEET 1/1

4

3

2

1