

4

3

2

1

WORKING VOLUME: 45700L  
TOTAL VOLUME: 48900L

CONCRETE:  
35MPa w/ 5-8% Air Entrainment  
Non-sulphate resistant

REINFORCING:  
FLOOR AND TOP  
15M at 150 O/C Outside Layer in Long Dimension  
15M at 300 O/C Inside Layer in Short Dimension  
Additional 2-15M in Each Direction Around Openings  
WALLS  
15M at 150 O/C Each Way

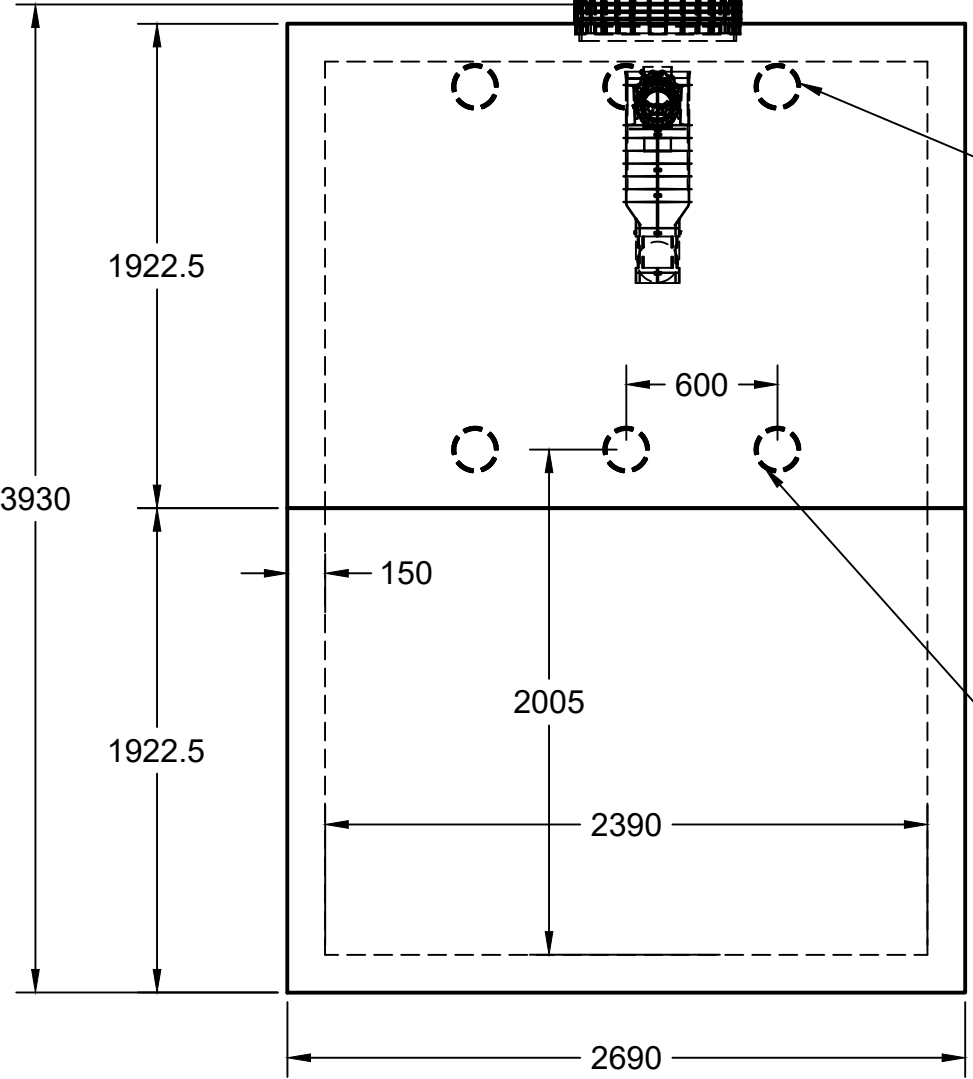
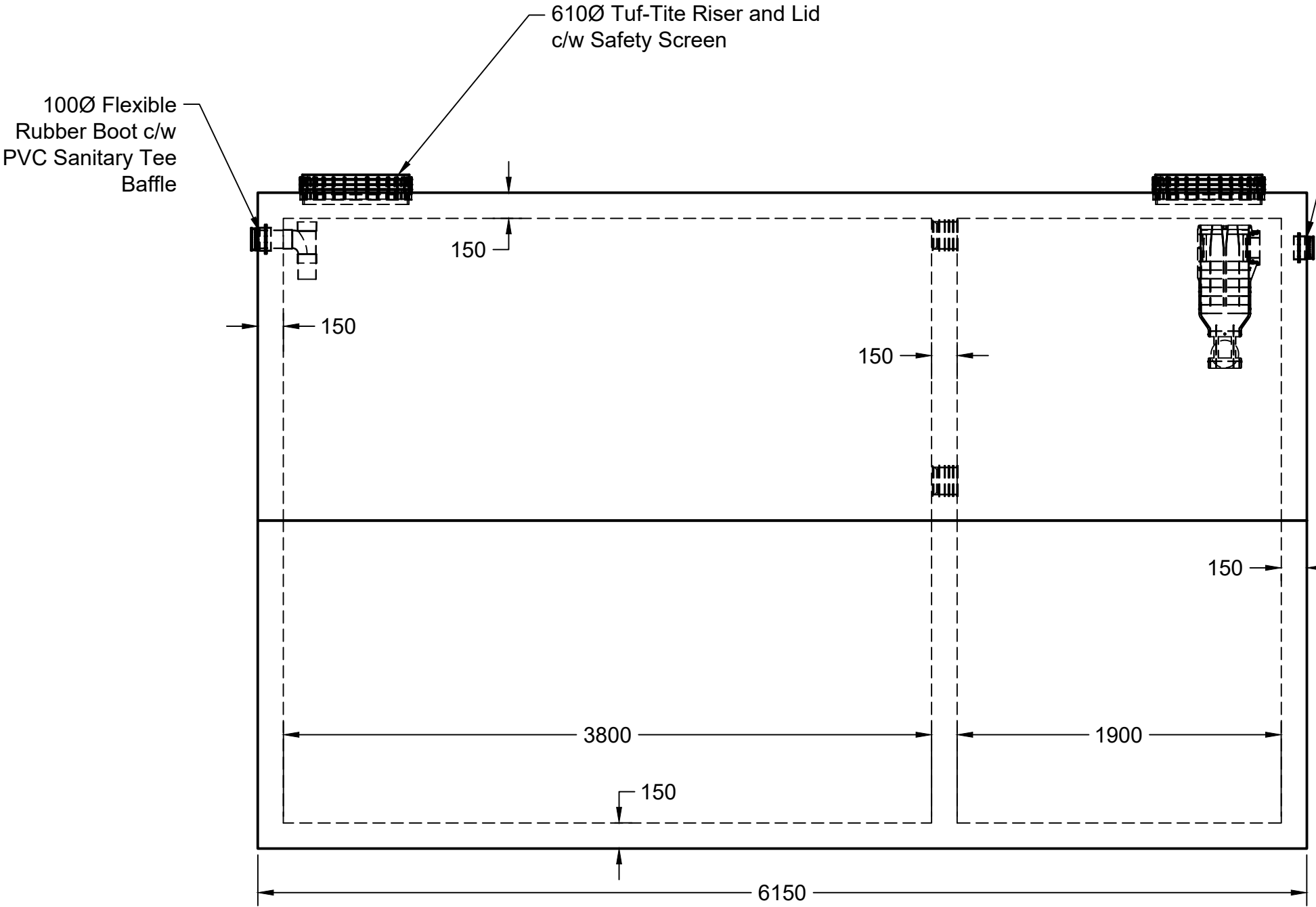
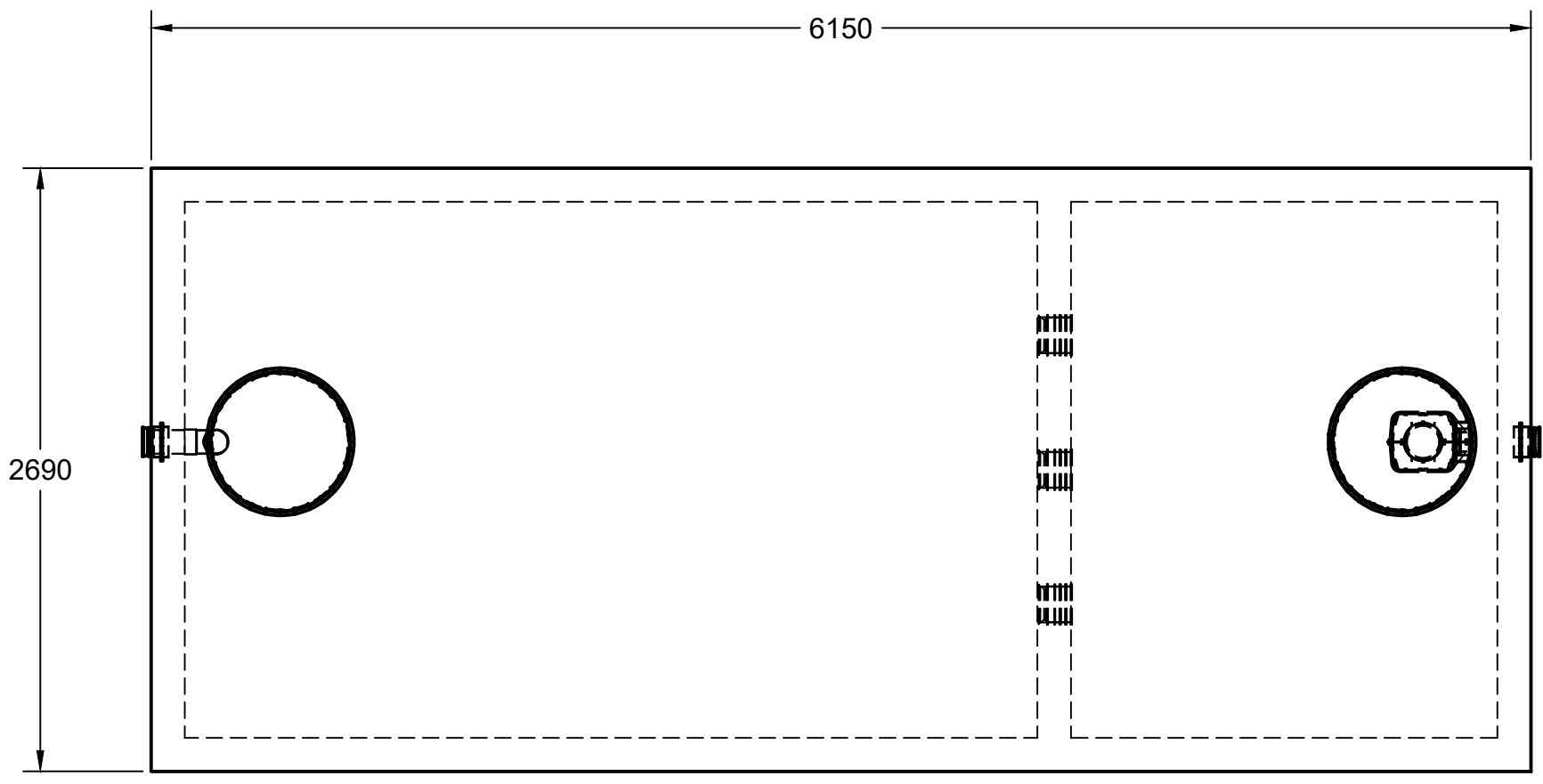
WEIGHT:  
TOP SECTION: 19000kgs  
BOTTOM SECTION: 19000kgs

MAX BURIAL DEPTH: 1200mm

WATER TIGHTNESS:  
2 rows butyl mastic between sections.  
Sealant applied onsite at time of installation according to manufacturers recommended method.

PIPE / WALL CONNECTIONS:  
100mm flexible watertight rubber seals integrally cast in concrete.

ACCESS OPENINGS:  
Tuf-Tite 610Ø Risers and Lids  
Contact us for additional options.



5450 Cuddy St Osgoode, ON K0A 2W0  
 tel: (613) 826.2318 fax: (613) 826.3679  
 toll free: 888.846.6664  
 website: www.boydbrosconcrete.ca  
 email: info@boydbrosconcrete.ca

PROJECT  
**BOYD BROS CONCRETE**

TITLE  
**45400 Regular Septic**

DRAWN Rob Sanna 2/01/24 APPROVED

SIZE	DWG NAME	REV
C	45400	3

SCALE 1:30	WEIGHT 38000KGS	SHEET 1/1
------------	-----------------	-----------

4

3

2

1