

4

3

2

1

TOTAL VOLUME: 45000L

CONCRETE: 35MPa WITH 5-8% AIR ENTRAINMENT
NON SULPHATE RESISTANT

REINFORCING: FLOOR AND TOP
15M at 150 O/C Outside Layer in Long Dimension
15M at 300 O/C Inside Layer in Short Dimension
Additional 2-15M in Each Direction Around Openings

WALLS
15M at 150 O/C Each Way

WEIGHT: TOP SECTION 18500KGS
BOTTOM SECTION 18500KGS
TOTAL 37000KGS

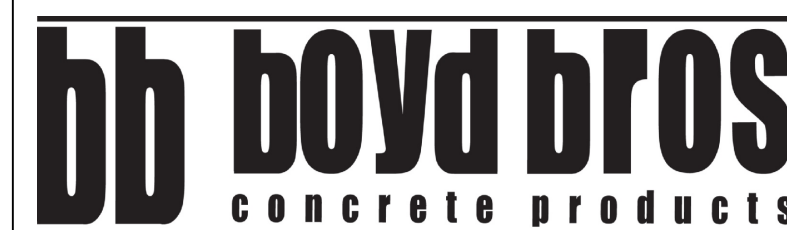
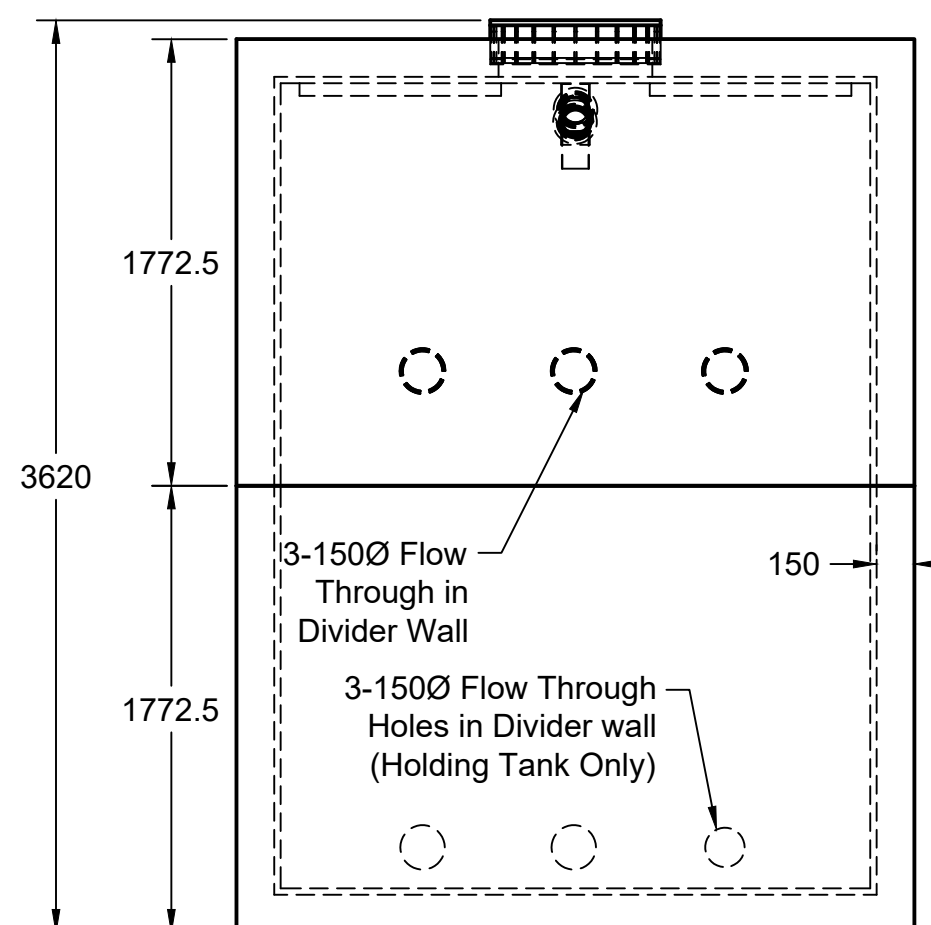
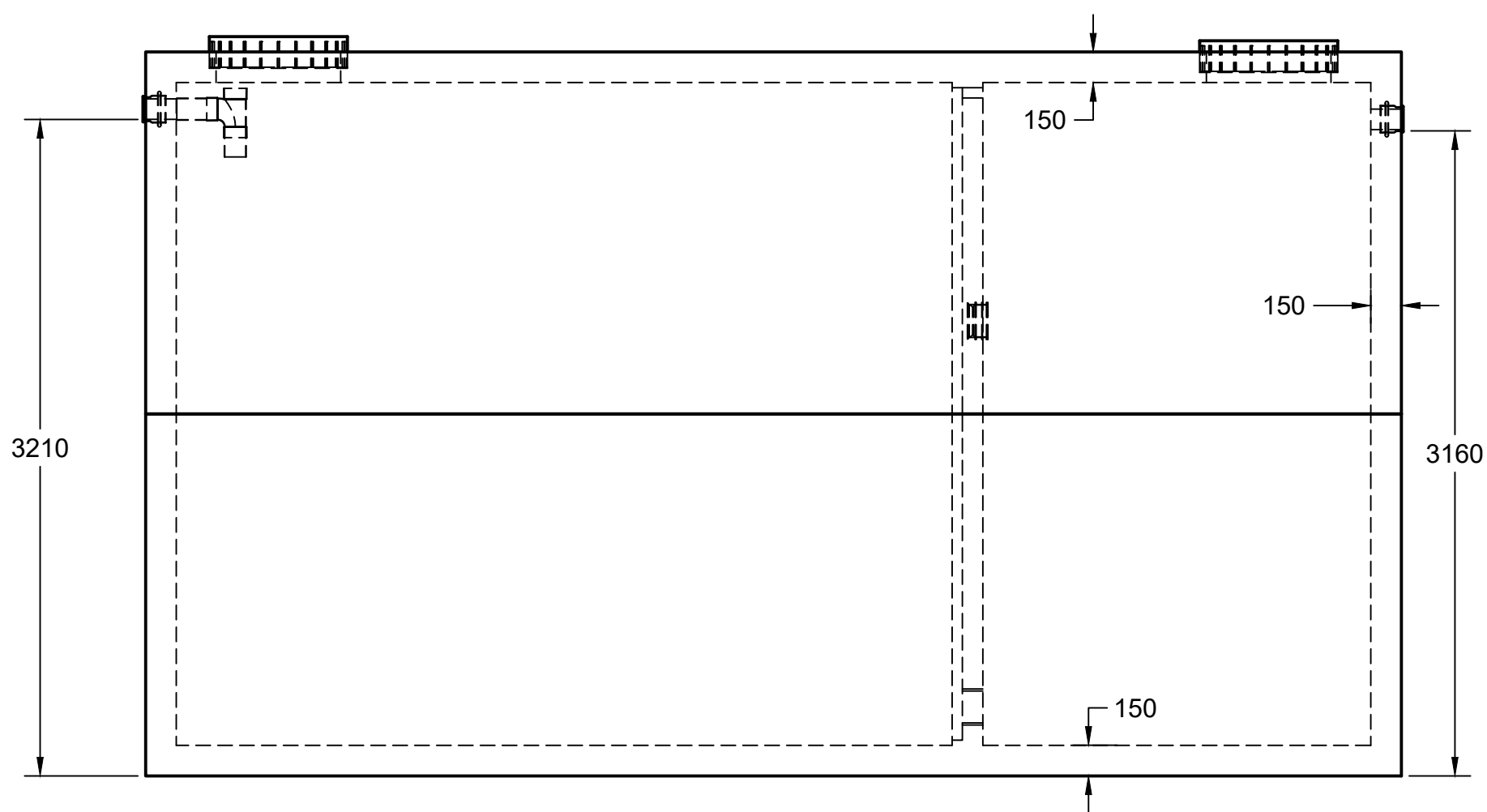
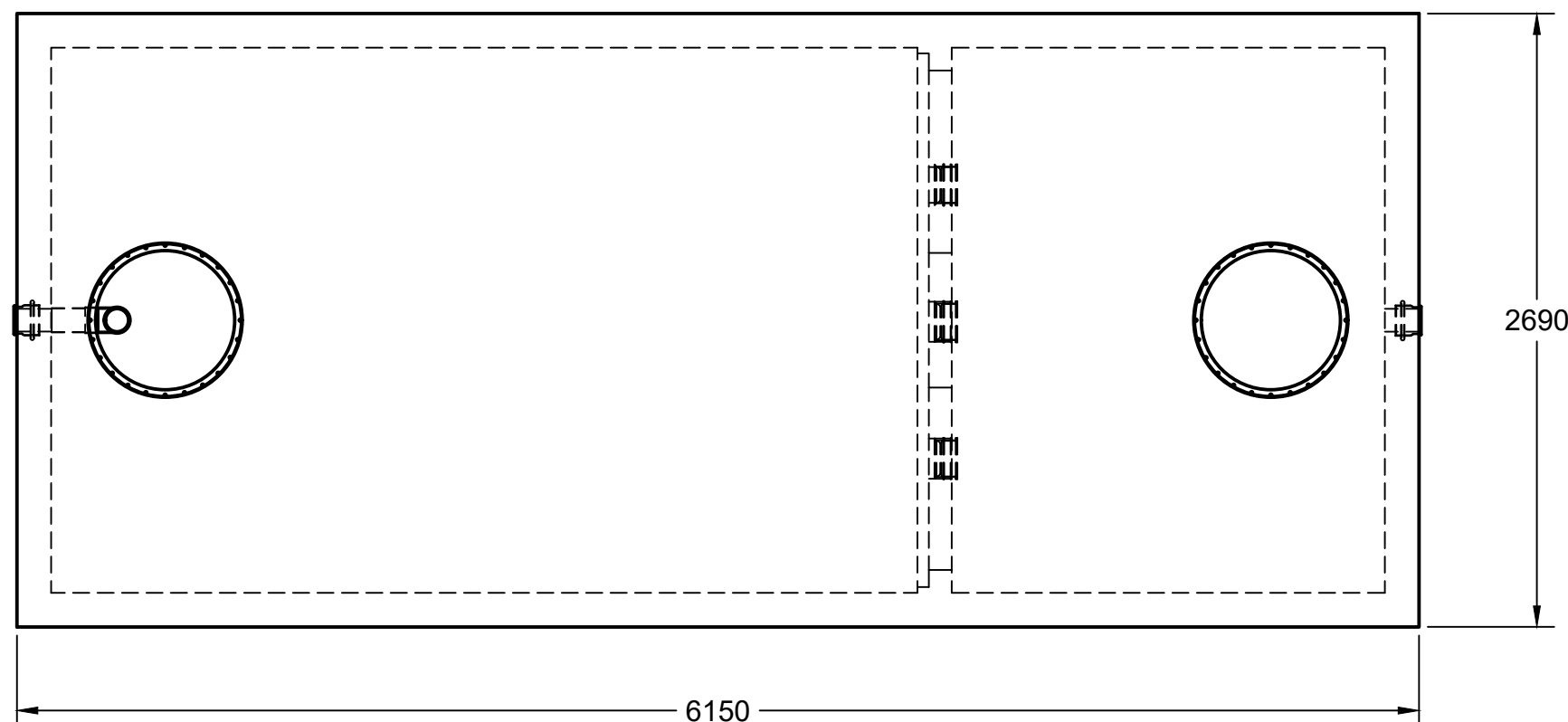
MAXIMUM BURIAL DEPTH: 1200MM OF GROUND COVER IN AREA OF
NON-VEHICULAR TRAFFIC

WATER TIGHTNESS: 2X ROWS CON-SEAL CS-102 MASTIC SEALANT BETWEEN
SECTIONS. SEALANT APPLIED ONSITE BY BOYD BROS CONCRETE ACCORDING TO
MANUFACTURER'S RECOMMENDED METHOD

PIPE/WALL CONNECTIONS: 100mmØ Flexible Rubber Bootseals

ACCESS OPENINGS:
610Ø Tuf-Tite Riser and Lid

TANK DESIGN CONFORMS TO CSA STANDARD B66-15



5450 Cuddy St Osgoode, ON K0A 2W0
tel: (613) 826.2318 fax: (613) 826.3679
toll free: 888.846.6664
website: www.boydbrosconcrete.ca
email: info@boydbrosconcrete.ca

PROJECT
Boyd Bros Concrete

TITLE
41200 Regular

DRAWN Rob Sanna 6/19/23 APPROVED

SIZE C	DWG NAME 41200	REV 3
-----------	-------------------	----------

SCALE 1:30	WEIGHT 37000kgs	SHEET 1/1
------------	-----------------	-----------

4

3

2

1

D

D

C

C

B

B

A

A